



EUROAQUA®

PPR & PP-RCT PLUMBING TECHNOLOGY



PPR & PPR-CT PIPES & FITTINGS



Ø40mm to Ø315mm

For Hot & Cold Water

INDUSTRIES WE SERVE



Sizes Available : 20mm to 315mm | Operating Temperature : -10°C to +99°C

THE SMART CHOICE FOR ENGINEERS & PLUMBERS

MRP PRICE LIST

From 01-06-2024

PL CODE 001/GEN 003/2024-25



Leading Manufacturer and Exporter of Complete Range of PPR Pipes and Fittings in India Since 2004

Scan for Website



www.euroaquappr.com

Head Office: Sankagiri - 637 301, Salem, Tamilnadu, India.

Customer Care: +91 4283 242936/37 | +91 99650 05555, 73730 73333

support@euroaquappr.com | www.plumtek.in | www.euroaquappr.com

Scan for Website



www.plumtek.in

25 METAL UNION

CODE	SIZE	PCS Pouch/Bag	MRP
EI301	20mm	12/180	385.64
EI302	25mm	10/150	472.69
EI303	32mm	6/90	700.27
EI304	40mm	8/80	947.10
EI305	50mm	6/48	1859.98
EI306	63mm	5/25	2543.78

28 MALE THREAD ELBOW

CODE	SIZE	PCS Pouch/Bag	MRP
EE401	20mmx1/2"	10/300	164.91
EE402	25mmx1/2"	12/240	178.60
EE403	25mmx3/4"	14/210	197.21
EE404	32mmx1/2"	8/120	226.51
EE405	32mmx3/4"mm	8/120	229.72
EE406	32mmx1"mm	10/100	407.67

28-A WALL PLATE MALE THREAD ELBOW

CODE	SIZE	PCS Pouch/Bag	MRP
EW401	20mmx1/2"	12/240	219.45
EW402	25mmx1/2"	12/240	225.23

30 STOP VALVE

CODE	SIZE	PCS Pouch/Bag	MRP
EH001	20mm	8/120	725.08
EH002	25mm	8/80	941.11
EH003	32mm	6/60	989.24
EH004	40mm	7/42	1613.79
EH005	50mm	10/50	2824.40
EH006	63mm	10/20	3504.57

33 PLUG

CODE	SIZE	PCS Pouch/Bag	MRP
ED101	1/2"	20/3000	6.84
ED102	3/4"	20/2000	12.83
ED103	1"	20/1000	21.39

34 CLAMP

CODE	SIZE	PCS Pouch/Bag	MRP
EG001	20mm	25/2500	10.27
EG002	25mm	28/1960	12.83
EG003	32mm	30/1500	20.53
EG004	40mm	20/1000	38.50
EG005	50mm	14/700	48.77
EG006	63mm	20/500	53.90

26 MALE THREAD COUPLER

CODE	SIZE	PCS Pouch/Bag	MRP
EB301	20mmx1/2"	10/300	159.78
EB302	20mmx3/4"	10/200	178.38
EB303	25mmx1/2"	15/300	161.49
EB304	25mmx3/4"	10/200	181.81
EB305	32mmx1/2"	14/210	185.44
EB306	32mmx3/4"	14/210	195.49
EB307	32mmx1"	15/150	371.74
EB308A	40mmx1"	6/60	575.00
EB308	40mmx1-1/4"	6/60	656.00
EB309	50mmx1-1/2"	5/50	823.04
EB310	63mmx2"	5/40	1244.62
EB311	75mmx2-1/2"	12/24	1968.89
EB312	90mmx3"	3/12	4040.96
EB313	110mmx4"	6/6	5474.61

29 FEMALE THREAD ELBOW

CODE	SIZE	PCS Pouch/Bag	MRP
EE201	20mmx1/2"	10/300	116.78
EE202	25mmx1/2"	12/240	128.76
EE203	25mmx3/4"	12/180	180.09
EE204	32mmx1/2"	10/150	168.12
EE205	32mmx3/4"	8/120	216.03
EE206	32mmx1"	10/100	437.40
EE207	40mmx1-1/4"	5/50	761.87
EE208	50mmx1 1/2"	10/50	1113.93

31 CONCEALED STOP VALVE

CODE	SIZE	PCS Pouch/Bag	MRP
EH001A	20mm	28/28	1238.42
EH002A	25mm	28/28	1497.22
EH003A	32mm	28/28	1588.13

A B C

35 PIPE CUTTER (Imported)

CODE	SIZE	PCS Pouch/Bag	MRP
EM006	20-40mm	1/12	693.00
EM007	20-63mm	1/12	2310.00

(NET BASIC PRICE)

37 WELDING MACHINE (Imported)

CODE	SIZE	PCS Pouch/Bag	MRP
EL112	20-63	5	3349.50
EL113	75-110	4	8662.50
EL114	160	1	9124.50

WELDING DIE ONLY

CODE	SIZE	PCS Pouch/Bag	MRP
EL106	125mm	-	2310.00

(NET BASIC PRICE)

39 REPAIR SET

CODE	SIZE	PCS Pouch/Bag	MRP
EZ001	9mm	***	299.25
EZ002	11mm	***	319.20

(NET BASIC PRICE)

27 FEMALE THREAD COUPLER

CODE	SIZE	PCS Pouch/Bag	MRP
EB201	20mmx1/2"	10/300	104.81
EB202	20mmx3/4"	12/240	154.43
EB203	25mmx1/2"	12/240	123.63
EB204	25mmx3/4"	12/240	171.54
EB205	32mmx1/2"	12/240	133.89
EB206	32mmx3/4"	10/200	180.09
EB207	32mmx1"	10/150	408.31
EB208A	40mmx1"	8/80	600.00
EB208	40mmx1-1/4"	8/80	703.69
EB209	50mmx1-1/2"	5/50	1035.22
EB210	63mmx2"	5/40	1512.19
EB211	75mmx2-1/2"	12/24	2221.02
EB212	90mmx3"	7/14	3770.60
EB213	110mmx4"	6/6	6420.94

29-A WALL PLATE FEMALE THREAD ELBOW

CODE	SIZE	PCS Pouch/Bag	MRP
EW201	20mmx1/2"	12/240	164.01
EW202	25mmx1/2"	12/240	173.25

29-B TEMPLATE - ADJUSTABLE

CODE	PCS Pouch/Bag	MRP
ET001	***	63.00

(FOR WALL MIXER ELBOW)

Scan QR Code for Installation

32 LONG PIPE PLUG

CODE	SIZE	PCS Pouch/Bag	MRP
ED201	1/2"	36/900	25.67
ED202	3/4"	24/600	29.94

36 PIPE CUTTER (Indian)

CODE	SIZE	PCS Pouch/Bag	MRP
EM006I	20-40mm	1/12	472.50
EM007I	20-75mm	***	1680.00

(NET BASIC PRICE)

38 WELDING MACHINE (Indian)

CODE	SIZE	PCS Pouch/Bag	MRP
EL112I	20-40	5	1732.50
EL114I	20-63	***	1995.00
EL113I	75-110	4	3360.00

(NET BASIC PRICE)

40 WELDING DEVICE (Hydraulic Pump)

CODE	SIZE	PCS Pouch/Bag	MRP
EB30	160mm	-	2047.50

(NET BASIC PRICE)

Available Colours



NET BASIC PRICE = LIST PRICE + GST



PPR

41

PN10 /SDR11 /S 5

CODE	SIZE / DxT	LENGTH / BUNDLE	MRP
EA001	20x2.0mm	75	63.91
EA002	25x2.3mm	50	98.56
EA003	32x2.9mm	30	156.80
EA004	40x3.7mm	20	246.40
EA005	50x4.6mm	15	380.80
EA006	63x5.8mm	10	612.27
EA007	75x6.8mm	7	848.21
EA008	90x8.2mm	5	1224.53
EA009	110x10.0mm	3	1806.93
*EA010	125x11.40mm	2	2389.33
*EA011	160x14.60mm	1	3808.00
*EA012	200x18.20mm	1	5898.67
*EA013	250x22.70mm	1	9258.67
*EA014	315x28.60mm	1	14634.67

42

PN16 /SDR7.4 /S3.2

CODE	SIZE / DxT	LENGTH / BUNDLE	MRP
EA201	20x2.8mm	75	89.60
EA202	25x3.5mm	50	143.36
EA203	32x4.4mm	30	224.00
EA204	40x5.5mm	20	343.47
EA205	50x6.9mm	15	537.60
EA206	63x8.6mm	10	866.13
EA207	75x10.3mm	7	1194.67
EA208	90x12.3mm	5	1717.33
EA209	110x15.1mm	3	2404.27
*EA210	125x16.9mm	2	3195.73
*EA211	160x21.9mm	1	5226.67

43

PN20 /SDR 6 /S2.5

CODE	SIZE / DxT	LENGTH / BUNDLE	MRP
EA301	20x3.4mm	75	104.53
EA302	25x4.2mm	50	159.79
EA303	32x5.4mm	30	261.33
EA304	40x6.7mm	20	401.71
EA305	50x8.3mm	15	621.23
EA306	63x10.5mm	10	985.60
EA307	75x12.5mm	7	1379.84
EA308	90x15.0mm	5	2090.67
EA309	110x18.3mm	3	2926.93
*EA310	125x20.8mm	2	3509.33
*EA311	160x26.6mm	1	6331.73

44

PN25 /SDR 5 /S 2 *

CODE	SIZE / DxT	LENGTH / BUNDLE	MRP
EA401	20x4.0mm	75	107.52
EA402	25x5.0mm	50	164.27
EA403	32x6.4mm	30	268.80
EA404	40x8.0mm	20	412.16
EA405	50x10.0mm	15	642.13
EA406	63x12.6mm	10	1030.40

45

PN06 /SDR17.5 /S8.25 *

CODE	SIZE / DxT	LENGTH / BUNDLE	MRP
EA512	200x11.4mm	1	4201.49
EA513	250x14.2mm	1	6581.49
EA514	315x17.90mm	1	9900.80

46

PN04 /SDR26 /S12.5 *

CODE	SIZE / DxT	LENGTH / BUNDLE	MRP
EA612	200x7.7mm	1	2982.93
EA613	250x8.6mm	1	4601.33
EA614	315x12.1mm	1	7140.00

★ Special request only
Specification: size(mm) X wall thickness(mm)

Available Colours:

PPR - 3L ADVANCE PRO

47

PN10 /SDR11 /S 5

CODE	SIZE / DxT	LENGTH / BUNDLE	MRP
EA001A	20x2.0mm	75	65.83
EA002A	25x2.3mm	50	101.52
EA003A	32x2.9mm	30	161.50
EA004A	40x3.7mm	20	253.79
EA005A	50x4.6mm	15	392.22
EA006A	63x5.8mm	10	630.63
EA007A	75x6.8mm	7	873.66
EA008A	90x8.2mm	5	1261.27
EA009A	110x10.0mm	3	1861.14
*EA010A	125x11.40mm	2	2461.01
*EA011A	160x14.60mm	1	3922.24
*EA012A	200x18.20mm	1	6075.63
*EA013A	250x22.70mm	1	9536.43
*EA014A	315x28.60mm	1	15073.71

48

PN16 /SDR7.4 /S3.2

CODE	SIZE / DxT	LENGTH / BUNDLE	MRP
EA201A	20x2.8mm	75	92.40
EA202A	25x3.5mm	50	147.84
EA203A	32x4.4mm	30	231.00
EA204A	40x5.5mm	20	354.20
EA205A	50x6.9mm	15	554.40
EA206A	63x8.6mm	10	893.20
EA207A	75x10.3mm	7	1232.00
EA208A	90x12.3mm	5	1771.00
EA209A	110x15.1mm	3	2479.40
*EA210A	125x16.9mm	2	3295.60
*EA211A	160x21.9mm	1	5390.00

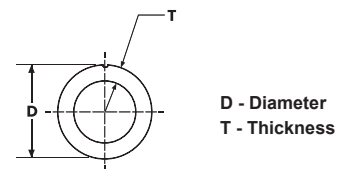
49

PN20 /SDR 6 /S2.5

CODE	SIZE / DxT	LENGTH / BUNDLE	MRP
EA301A	20x3.4mm	75	107.80
EA302A	25x4.2mm	50	164.78
EA303A	32x5.4mm	30	269.50
EA304A	40x6.7mm	20	414.26
EA305A	50x8.3mm	15	640.64
EA306A	63x10.5mm	10	1016.40
EA307A	75x12.5mm	7	1422.96
EA308A	90x15.0mm	5	2156.00
EA309A	110x18.3mm	3	3018.40
*EA310A	125x20.8mm	2	3619.00
*EA311A	160x26.6mm	1	6529.60

Ø 125mm PPR PIPES & ALL FITTINGS AVAILABLE

★ Special request only
Specification: size(mm) X wall thickness(mm)



Available Colours:

PPR+FRP - THERMOKING

51

PN10 /SDR11 /S5

CODE	SIZE / DxT	LENGTH / BUNDLE	MRP
EA005F	50x4.6mm	15	403.64
EA006F	63x5.8mm	10	649.00
EA007F	75x6.8mm	7	899.10
EA008F	90x8.2mm	5	1298.00
EA009F	110x10.0mm	3	1915.34
*EA010F	125x11.40mm	2	2532.68
*EA011F	160x14.60mm	1	4036.48
*EA012F	200x18.20mm	1	6252.59
*EA013F	250x22.70mm	1	9814.19
*EA014F	315x28.60mm	1	15512.75

52

PN16 /SDR7.4 /S3.2

CODE	SIZE / DxT	LENGTH / BUNDLE	MRP
EA203F	32x4.4mm	30	237.44
EA204F	40x5.5mm	20	364.07
EA205F	50x6.9mm	15	569.85
EA206F	63x8.6mm	10	918.09
EA207F	75x10.3mm	7	1266.35
EA208F	90x12.3mm	5	1820.36
EA209F	110x15.1mm	3	2548.52
*EA210F	125x16.90mm	2	3387.47
*EA211F	160x21.9mm	1	5540.27

53

PN20 /SDR 6 /S2.5

CODE	SIZE / DxT	LENGTH / BUNDLE	MRP
EA304F	40x6.7mm	20	425.81
EA305F	50x8.3mm	15	658.50
EA306F	63x10.5mm	10	1044.73
EA307F	75x12.5mm	7	1462.63
EA308F	90x15.0mm	5	2216.11
EA309F	110x18.3mm	3	3102.54
*EA310F	125x20.8mm	2	3719.88
*EA311F	160x26.6mm	1	6711.63

54

PN25 /SDR 5 /S 2 *

CODE	SIZE / DxT	LENGTH / BUNDLE	MRP
EA404F	40x8.0mm	20	436.88
EA405F	50x10.0mm	15	680.65
EA406F	63x12.6mm	10	1092.22

55

PN06 /SDR17.5 /S8.25 *

CODE	SIZE / DxT	LENGTH / BUNDLE	MRP
EA612F	200x11.4mm	1	4453.57
EA613F	250x14.2mm	1	6976.37
EA613F	315x18mm	1	10494.84

56

PN04 /SDR26 /S12.5 *

CODE	SIZE / DxT	LENGTH / BUNDLE	MRP
EA612F	200x7.7mm	1	3161.90
EA613F	250x8.6mm	1	4877.40
EA614F	315x12.1mm	1	7568.40

★ Special request only
Specification: size(mm) X wall thickness(mm)

Available Colours:

PLUMTEK PE-RT Pipe can be supplied in both coil form & Length of Standard 3 Mtr (any Length)



PE-RT PIPE COIL (PN16/SDR7.4/S 3.2)			
CODE	SIZE	PCS	MRP
PRTC101	20mm	30 Mtr	100.00
PRTC102	25mm	30 Mtr	160.00
PRTC103	32mm	30 Mtr	250.00

*30,50,60 Mtrs Coils Available



PE-RT PIPE COIL (PN20/SDR 6/S2.5)			
CODE	SIZE	PCS	MRP
PRTC201	20mm	30 Mtr	116.67
PRTC202	25mm	30 Mtr	178.33
PRTC203	32mm	30 Mtr	291.67

*30,50,60 Mtrs Coils Available



PE-RT PIPE (PN16/SDR7.4/S 3.2)			
CODE	SIZE	PCS	MRP
PRTL101	20mm	50	100.00
PRTL102	25mm	40	160.00
PRTL103	32mm	30	250.00

*Standard Length 3 Mtrs



PE-RT PIPE (PN20/SDR 6/S2.5)			
CODE	SIZE	PCS	MRP
PRTL201	20mm	75	116.67
PRTL202	25mm	50	178.33
PRTL203	32mm	30	291.67

*Standard Length 3 Mtrs



SOCKET			
CODE	SIZE	PCS	MRP
PBSK001	20mm	100/10	114.26
PBSK002	25mm	80/8	169.07
PBSK003	32mm	60/6	227.78



ELBOW 90°			
CODE	SIZE	PCS	MRP
PBEL001	20mm	60/6	133.52
PBEL002	25mm	50/5	202.78
PBEL003	32mm	40/4	295.19



ELBOW 45°			
CODE	SIZE	PCS	MRP
PBEF001	20mm	*	152.00
PBEF002	25mm	*	232.00
PBEF003	32mm	*	340.00



MALE THREAD ELBOW			
CODE	SIZE	PCS	MRP
PBME001	20x1/2"	*	225.00
PBME002	25x1/2"	*	240.00



FEMALE THREAD ELBOW			
CODE	SIZE	PCS	MRP
PBFE001	20x1/2"	*	172.00
PBFE002	25x1/2"	*	188.00



WALL PLATE MALE THREAD ELBOW			
CODE	SIZE	PCS	MRP
PBWM001	20x1/2"	72/6	234.07
PBWM002	25x1/2"	50/5	250.65



WALL PLATE FEMALE THREAD ELBOW			
CODE	SIZE	PCS	MRP
PBWF001	20x1/2"	72/6	181.19
PBWF002	25x1/2"	50/5	197.76



TEMPLATE - ADJUSTABLE (WALL MIXER ELBOW)			
CODE	PCS	MRP	
PWMT001	***	60.00	

Scan QR Code for Installation



WALL PLATE BRASS FEMALE THREAD ELBOW			
CODE	SIZE	PCS	MRP
PRSWF001	20x1/2"	150/50	609.35
PRSWF002	25x1/2"	*	759.26



TEE			
CODE	SIZE	PCS	MRP
PBTE001	20mm	*	188.24
PBTE002	25mm	*	286.11
PBTE003	32mm	30/3	399.44



TEE MALE THREAD			
CODE	SIZE	PCS	MRP
PBTM001	20x1/2"	60/6	280.37
PBTM002	25x1/2"	50/5	352.04
PBTM003	32x1/2"	40/4	415.56



TEE FEMALE THREAD			
CODE	SIZE	PCS	MRP
PBTF001	20x1/2"	60/6	235.19
PBTF002	25x1/2"	50/5	306.85
PBTF003	32x1/2"	40/4	372.78



MANIFOLD TEE			
CODE	SIZE	PCS	MRP
PBMT001	25x20x25mm	*	195.81
PBMT002	32x20x32mm	*	253.33
PBMT003	32x25x32mm	*	277.78



CONCEALED STOP VALVE			
CODE	SIZE	PCS	MRP
PBCSV001	20mm	*	1150.00
PBCSV002	25mm	*	1250.00



STOP VALVE			
CODE	SIZE	PCS	MRP
PBSTV001	20mm	*	*
PBSTV002	25mm	*	*



MALE THREAD ADAPTOR			
CODE	SIZE	PCS	MRP
PBAM001	20x1/2"	100/10	206.39
PBAM002	25x3/4"	80/8	325.74
PBAM003	32x1"	60/6	539.44



FEMALE THREAD ADAPTOR			
CODE	SIZE	PCS	MRP
PBAF001	20x1/2"	100/10	161.20
PBAF002	25x3/4"	80/8	317.41
PBAF003	32x1"	60/6	595.37



BRASS MALE THREAD ADAPTOR			
CODE	SIZE	PCS	MRP
PRSAM001	20x1/2"	250/25	276.02
PRSAM002	25x1/2"	200/20	435.93
PRSAM003	25x3/4"	140/20	442.59
PRSAM004	32x1"	*	642.04



BRASS FEMALE THREAD ADAPTOR			
CODE	SIZE	PCS	MRP
PRSAF001	20x1/2"	200/20	336.02
PRSAF002	25x1/2"	150/50	449.26



REDUCER			
CODE	SIZE	PCS	MRP
PBRD001	25/20mm	*	81.20
PBRD002	32/25mm	*	107.41
PBRD003	32/20mm	*	112.22



TANK CONNECTOR			
CODE	SIZE	PCS	MRP
PBTC001	32x1"	*	270.74



END CAP			
CODE	SIZE	PCS	MRP
PBEC001	20mm	*	66.76
PBEC002	25mm	*	95.37
PBEC003	32mm	*	125.93



CROSSOVER BEND			
CODE	SIZE	PCS	MRP
PBCB001	20mm	*	173.00
PBCB002	25mm	*	263.00
PBCB003	32mm	*	340.00

Prices are Per Metre for Pipe and Per Piece for Fittings

28 **WALL CLAMP**

CODE	SIZE	PCS (CTN/POUCH)	MRP
PTWC001	20mm	500/50	8.89
PTWC002	25mm	400/40	11.11
PTWC003	32mm	300/30	17.78

29 **LONG PIPE PLUG**

CODE	SIZE	PCS (CTN/POUCH)	MRP
P RTP001	1/2"	200/20	22.04

30 **PIPE PLUG**

CODE	SIZE	PCS (CTN/POUCH)	MRP
P RTP101	1/2"	300/50	10.37

31 **ENTRY SLEEVE**

CODE	SIZE	PCS (CTN/POUCH)	MRP
PBES001	20mm	500/50	4.81
PBES002	25mm	400/40	7.22
PBES003	32mm	300/30	9.63

32 **SPACER WASHER**

CODE	SIZE	PCS (CTN/POUCH)	MRP
P RTS001	20mm	25	7.41
P RTS002	25mm	25	9.26
P RTS003	32mm	25	14.81

33 **O-RING**

CODE	SIZE	PCS (CTN/POUCH)	MRP
P DMO001	20mm	25	14.81
P DMO002	25mm	25	18.52
P DMO003	32mm	25	22.22

34 **GRAB RING**

CODE	SIZE	PCS (CTN/POUCH)	MRP
PSSG001	20mm	25	9.26
PSSG002	25mm	25	11.11
PSSG003	32mm	25	16.67

35 **PIPE EDGE TRIMMER**

CODE	SIZE	PCS (CTN/POUCH)	MRP
P AL001	20-40mm	200/20	2777.78

36 **PIPE CUTTER (Imported)**

CODE	SIZE	PCS (CTN/POUCH)	MRP
EM006	20-40mm	1/12	693.00
EM007	20-63mm	1/12	2310.00

(NET BASIC PRICE)

PE-RT PIPE SERIES

101 **PN10 / SDR11 / S5**

CODE	SIZE	PCS (CTN/POUCH)	MRP
P RTL001	20x2.0mm	75	71.33
P RTL002	25x2.3mm	50	110.00
P RTL003	32x2.9mm	30	175.00
P RTL004	40x3.7mm	20	275.00
P RTL005	50x4.6mm	15	425.00
P RTL006	63x5.8mm	10	683.33
P RTL007	75x6.8mm	7	946.67
P RTL008	90x8.2mm	5	1366.67
P RTL009	110x10.0mm	3	2016.67
P RTL010	125x11.40mm	2	2666.67
P RTL011	160x14.60mm	1	4250.00

102 **PN16 / SDR7.4 / S 3.2**

CODE	SIZE	PCS (CTN/POUCH)	MRP
P RTL101	20x2.8mm	75	100.00
P RTL102	25x3.5mm	50	160.00
P RTL103	32x4.4mm	30	250.00
P RTL104	40x5.5mm	20	383.33
P RTL105	50x6.9mm	15	600.00
P RTL106	63x8.6mm	10	966.67
P RTL107	75x10.3mm	7	1333.33
P RTL108	90x12.3mm	5	1916.67
P RTL109	110x15.1mm	3	2683.33
P RTL110	125x16.90mm	2	3566.67
P RTL111	160x21.9mm	1	5833.33

103 **PN20 / SDR 6 / S2.5**

CODE	SIZE	PCS (CTN/POUCH)	MRP
P RTL201	20x3.4mm	75	116.67
P RTL202	25x4.2mm	50	178.33
P RTL203	32x5.4mm	30	291.67
P RTL204	40x6.7mm	20	448.33
P RTL205	50x8.3mm	15	693.33
P RTL206	63x10.5mm	10	1100.00
P RTL207	75x12.5mm	7	1540.00
P RTL208	90x15.0mm	5	2333.33
P RTL209	110x18.3mm	3	3266.67
P RTL210	125X20.8mm	2	3916.67
P RTL211	160x26.6mm	1	7066.67

PE-RT FABRICATED FITTINGS

151 **PLASTIC UNION**

CODE	SIZE	PCS (CTN/POUCH)	MRP
P RTRU001F	20mm	*	71.11
P RTRU002F	25mm	*	107.78
P RTRU003F	32mm	*	161.85

153 **MALE THREAD COUPLER**

CODE	SIZE	PCS (CTN/POUCH)	MRP
P RTRCM002F	20x3/4"	*	170.56
P RTRCM003F	25x1/2"	*	156.44
P RTRCM005F	32x1/2"	*	182.78
P RTRCM006F	32x3/4"	*	192.22

154 **FEMALE THREAD COUPLER**

CODE	SIZE	PCS (CTN/POUCH)	MRP
P RTRCF002F	20x3/4"	*	147.22
P RTRCF003F	25x1/2"	*	124.78
P RTRCF005F	32x1/2"	*	137.78
P RTRCF006F	32x3/4"	*	177.22

155 **FEMALE THREAD TEE**

CODE	SIZE	PCS (CTN/POUCH)	MRP
P RRTTF003F	25x3/4"	*	185.56
P RRTTF005F	32x3/4"	*	218.89
P RRTTF006F	32x1"	*	435.00

156 **MALE THREAD TEE**

CODE	SIZE	PCS (CTN/POUCH)	MRP
P RRTTM003F	25x3/4"	*	219.00
P RRTTM005F	32x3/4"	*	250.00
P RRTTM006F	32x1"	*	418.00

157 **MALE THREAD ELBOW**

CODE	SIZE	PCS (CTN/POUCH)	MRP
P RRTMF003F	25x3/4"	*	204.00
P RRTMF005F	32x3/4"	*	240.00
P RRTMF006F	32x1"	*	397.00

158 **FEMALE THREAD ELBOW**

CODE	SIZE	PCS (CTN/POUCH)	MRP
P RRETF003F	25x3/4"	*	187.22
P RRETF005F	32x3/4"	*	227.22
P RRETF006F	32x1"	*	421.67

161 **MALE THREAD UNION**

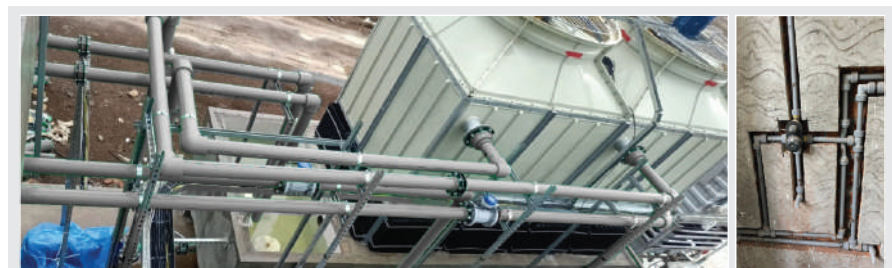
CODE	SIZE	PCS (CTN/POUCH)	MRP
P RRTUM001F	20x1/2"	*	352.22
P RRTUM002F	25x3/4"	*	502.93
P RRTUM003F	32x1"	*	729.63

162 **FEMALE THREAD UNION**

CODE	SIZE	PCS (CTN/POUCH)	MRP
P RRTUF001F	20x1/2"	*	335.56
P RRTUF002F	25x3/4"	*	472.93
P RRTUF003F	32x1"	*	739.63

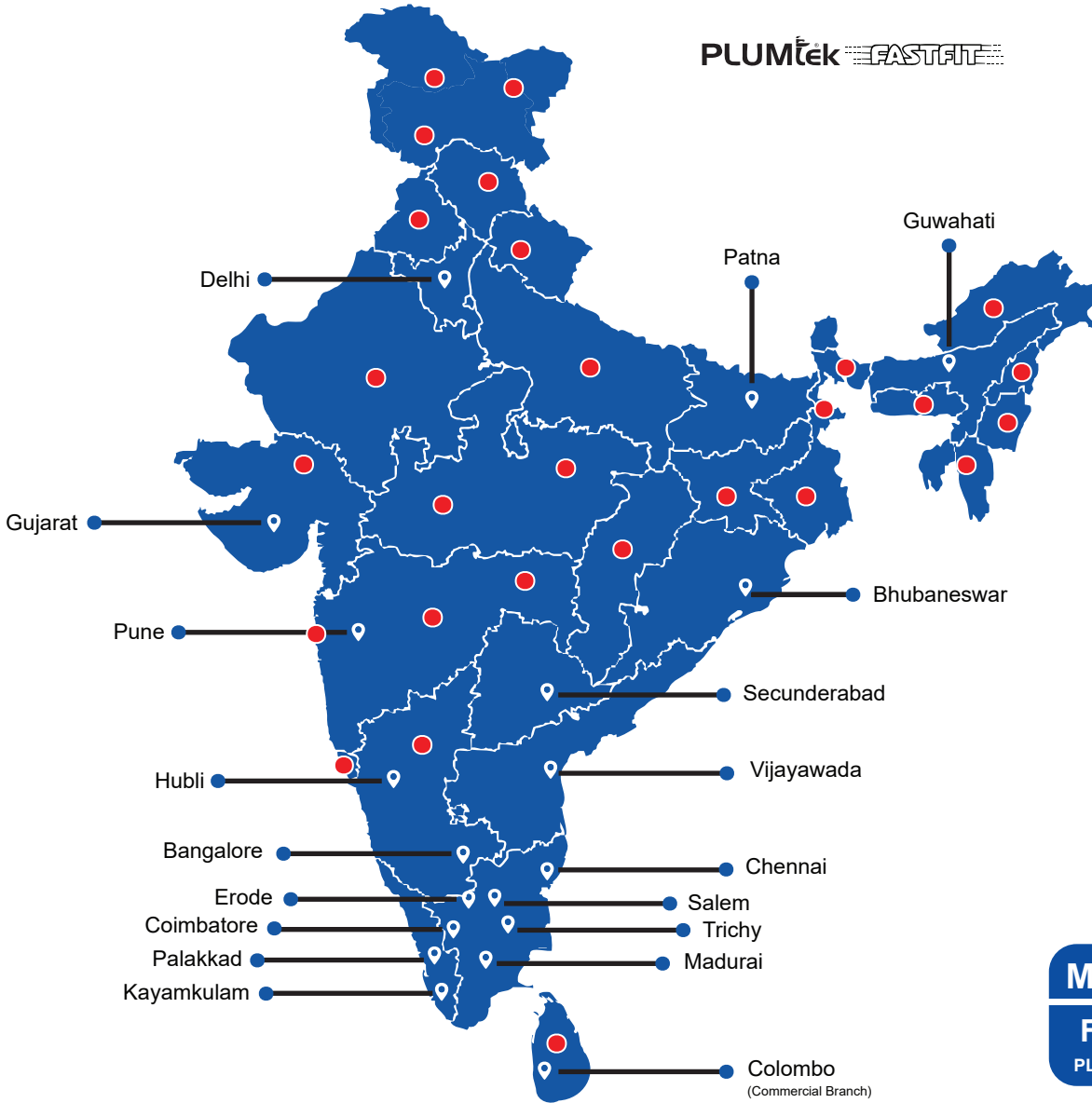
163 **METAL UNION**

CODE	SIZE	PCS (CTN/POUCH)	MRP
P RRTUN001F	25x3/4"	*	353.89
P RRTUN002F	32x3/4"	*	434.26
P RRTUN003F	32x1"	*	636.30



Prices are Per Metre for Pipe and Per Piece for Fittings

OUR BRANCHES



Scan for Whatsapp

Scan for Certificates

Scan for Youtube

MRP PRICE LIST
From 01-06-2024
PL CODE 001/GEN 003/2024-25

TERMS & CONDITIONS

- MRP is inclusive of all Taxes.
- MRP is Per Metre/Piece only.
- No Cash Transaction is Allowed.
- MRP is subject to change without Prior Notice.
- Prevailing Rates will be changed at the Time of dispatch.
- All Previous MRP List get Cancelled.
- All Payments to be made by through NEFT/RTGS only.
- All Transactions are subject to Sankagiri Jurisdiction only.
- 24% Interest will be Charged for Overdue Payments.



Our Branches



Products Available Areas (Other than Branches)

TAPS & FAUCETS | PVC HOSES | PPR PIPES & FITTINGS | PE-RT PIPES & FITTINGS | HDPE PIPES & FITTINGS

Scan for Website

www.euroaquappr.com

Manufactured By

EUROAQUA PLUMTEK PVT LTD

An ISO 9001 - 2015 Certified Company

Head Office: Sankagiri - 637 301, Salem, Tamilnadu, India.

Customer Care: +91 4283 242936/37 | +91 99650 05555, 73730 73333

support@euroaquappr.com | www.plumtek.in | www.euroaquappr.com

Scan for Website

www.plumtek.in