



## PERT Pipes & PB1 Universal Push Fittings



**-30°C to 95°C**  
(Operating Temperature)



**NO GLUE NEEDED**  
**NO WELDING NEEDED**

**JUST PUSH INSIDE**  
**EASY AND FASTFIT**

### SIMPLE & EASY PLUMBING SOLUTION FOR ANY APPLICATION

**MRP PRICE LIST**  
From 02-05-2023  
PL CODE 001/2023-2024



## TABLE OF CONTENTS

S.NO	TOPIC	PAGE.NO
1	PLUMTEK PE-RT PIPE	3
2	STRUCTURE OF PB1 UNIVERSAL FITTING	3
3	PLUMTEK PE-RT PIPES & FITTINGS	4
4	PIPE SERIES	5
5	PE-RT FABRICATED FITTINGS	5
6	ABOUT PE-RT PIPES & FITTINGS	6
7	IMPORTANT FEATURES OF PLUMTEK PERT PIPES & FITTINGS	6
8	PLUMTEK FASTFIT SYSTEM INSTALLATION GUIDE	7
9	BENDING PE-RT PIPE	7
10	THINGS TO REMEMBER DURING INSTALLATION	8
11	RE - INSTALLATION & REPAIR	8
12	FIELDS OF APPLICATIONS	8
13	ACCEPTABLE FACTORS & REMEDIES	9
14	APPLICATION CLASS TABLE ( DIN EN ISO 22391 -1,2 )	10
15	PIPE SERIES - TABLE	11
16	PLUMTEK PE-RT SOCKET FUSION FITTINGS	12
17	ABOUT US	14

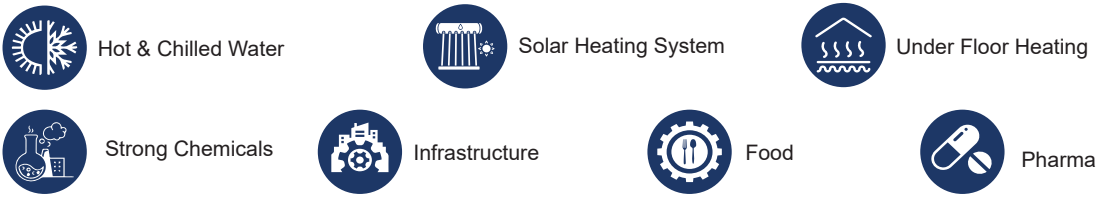




**PLUMTEK PE-RT PIPE**

PLUMTEK FASTFIT PE-RT (Type II) pipes is a raised temperature resistant Polyethylene (PE-RT) with superior performance, even at extreme temperatures. The pipes are mainly used for Drinking water & Industrial installation. Raw material used are imported from Europe & Japan.

Due to molecular structure and its incorporation of unique co-monomers, the tie chain formation in between the material's crystalline domains is enhanced, giving it a high resistance to slow crack growth and prolonged pressure at elevated temperatures. To further enhance the material's durability at such high temperatures, a special additive package is added to protect the polymer chains from oxidation enabling a 25 year design life as per the ISO 22391:2009 standard. In addition, the material also demonstrates an excellent performance under sub-zero conditions of upto -30°C.



**STRUCTURE OF PB1 UNIVERSAL FITTING**

**O-Ring**  
The O-ring is resistant to high or low temperatures. Made of EPDM Material for long lasting and hygiene property.

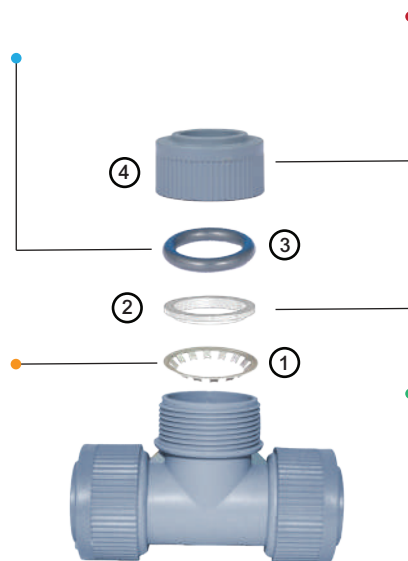
**Grab Ring**  
Grab ring is made of 316 stainless steel, which is an excellent corrosion resistant and has the strength to crawl at high temperatures.

**Retaining Cap**

The retaining cap is factory fitted and does not require further tightening to get the proper torque. If the cap is loose, it can be easily tightened using hands without any tools.

**Spacer Washer**

Space washer is designed to separate the O-ring seal from the grab ring and proper seating area for O-ring.



PB1 Universal Pushfit Fittings for Hot & Cold Water Pipe

- PB1 Universal Push fittings available from Ø 20mm - Ø 32mm only.
- Socket fusion fittings available from 20mm-160mm [Similar to PPR pipe joining method]
- Butt fusion available at 200mm, 250mm, 315mm.

**PLUMTEK PE-RT PIPES & FITTINGS**

PLUMTEK PE-RT Pipe can be supplied in both coil form & Length of Standard 3 Mtr ( any Length )

**PE-RT PIPE COIL  
PN16/SDR7.4/S 3.2**



1	CODE	SIZE	PCS	MRP
	PRTC101	20mm	(BUNDLE/ROLL) 30 Mtr	(MRP PER METRE) 100.00
	PRTC102	25mm	30 Mtr	160.00
	PRTC103	32mm	30 Mtr	250.00

\*30,50,60 Mtrs Coils Available

**PE-RT PIPE COIL  
PN20/SDR 6/S2.5**



2	CODE	SIZE	PCS	MRP
	PRTC201	20mm	(BUNDLE/ROLL) 30 Mtr	(MRP PER METRE) 116.67
	PRTC202	25mm	30 Mtr	178.33
	PRTC203	32mm	30 Mtr	291.67

\*30,50,60 Mtrs Coils Available

**PE-RT PIPE  
PN16/SDR7.4/S 3.2**



3	CODE	SIZE	PCS	MRP
	PRTL101	20mm	(LENGTH/BUNDLE) 50	(MRP PER METRE) 100.00
	PRTL102	25mm	40	160.00
	PRTL103	32mm	30	250.00

\*Standard Length 3 Mtrs

**PE-RT PIPE  
PN20/SDR 6/S2.5**



4	CODE	SIZE	PCS	MRP
	PRTL201	20mm	(LENGTH/BUNDLE) 75	(MRP PER METRE) 116.67
	PRTL202	25mm	50	178.33
	PRTL203	32mm	30	291.67

\*Standard Length 3 Mtrs

**SOCKET**



5	CODE	SIZE	PCS	MRP
	PBSK001	20mm	100/10	114.26
	PBSK002	25mm	80/8	169.07
	PBSK003	32mm	60/6	227.78

**ELBOW 90°**



6	CODE	SIZE	PCS	MRP
	PBEL001	20mm	60/6	133.52
	PBEL002	25mm	50/5	202.78
	PBEL003	32mm	40/4	295.19

**ELBOW 45°**



7	CODE	SIZE	PCS	MRP
	PBEF001	20mm	(CTN/POUCH) *	152.00
	PBEF002	25mm	*	232.00
	PBEF003	32mm	*	340.00

**MALE THREAD ELBOW**



8	CODE	SIZE	PCS	MRP
	PBME001	20x1/2"	(CTN/POUCH) *	225.00
	PBME002	25x1/2"	*	240.00

**FEMALE THREAD ELBOW**



9	CODE	SIZE	PCS	MRP
	PBFE001	20x1/2"	(CTN/POUCH) *	172.00
	PBFE002	25x1/2"	*	188.00

**WALL PLATE MALE  
THREAD ELBOW**



10	CODE	SIZE	PCS	MRP
	PBWM001	20x1/2"	(CTN/POUCH) 72/6	234.07
	PBWM002	25x1/2"	50/5	250.65

**WALL PLATE FEMALE  
THREAD ELBOW**



11	CODE	SIZE	PCS	MRP
	PBWF001	20x1/2"	(CTN/POUCH) 72/6	181.19
	PBWF002	25x1/2"	50/5	197.76

**TEMPLATE - ADJUSTABLE  
(WALL MIXER ELBOW)**



12	CODE	PCS	MRP
	PWMT001	***	60



**WALL PLATE BRASS  
FEMALE THREAD ELBOW**



13	CODE	SIZE	PCS	MRP
	PRSWF001	20x1/2"	(CTN/POUCH) 150/50	609.35
	PRSWF002	25x1/2"	*	759.26

**TEE**



14	CODE	SIZE	PCS	MRP
	PBTE001	20mm	(CTN/POUCH) *	188.24
	PBTE002	25mm	*	286.11
	PBTE003	32mm	30/3	399.44

**TEE MALE THREAD**



15	CODE	SIZE	PCS	MRP
	PBTM001	20x1/2"	60/6	280.37
	PBTM002	25x1/2"	50/5	352.04
	PBTM003	32x1/2"	40/4	415.56

**TEE FEMALE THREAD**



16	CODE	SIZE	PCS	MRP
	PBTF001	20x1/2"	(CTN/POUCH) 60/6	235.19
	PBTF002	25x1/2"	50/5	306.85
	PBTF003	32x1/2"	40/4	372.78

**MANIFOLD TEE**



17	CODE	SIZE	PCS	MRP
	PBMT001	25x20x25mm	(CTN/POUCH) *	195.81
	PBMT002	32x20x32mm	*	253.33
	PBMT003	32x25x32mm	*	277.78

**CONCEALED STOP VALVE**



18	CODE	SIZE	PCS	MRP
	PBCSV001	20mm	(CTN/POUCH) *	*
	PBCSV002	25mm	*	*



**STOP VALVE**



19	CODE	SIZE	PCS	MRP
	PBSTV001	20mm	(CTN/POUCH) *	*
	PBSTV002	25mm	*	*

**MALE THREAD ADAPTOR**



20	CODE	SIZE	PCS	MRP
	PBAM001	20x1/2"	(CTN/POUCH) 100/10	206.39
	PBAM002	25x3/4"	80/8	325.74
	PBAM003	32x1"	60/6	539.44

**FEMALE THREAD ADAPTOR**



21	CODE	SIZE	PCS	MRP
	PBAF001	20x1/2"	(CTN/POUCH) 100/10	161.20
	PBAF002	25x3/4"	80/8	317.41
	PBAF003	32x1"	60/6	595.37

**BRASS MALE THREAD ADAPTOR**



22	CODE	SIZE	PCS	MRP
	PRSAM001	20x1/2"	(CTN/POUCH) 250/25	276.02
	PRSAM002	25x1/2"	200/20	435.93
	PRSAM003	25x3/4"	140/20	442.59
	PRSAM004	32x1"	*	642.04

**BRASS FEMALE THREAD ADAPTOR**



23	CODE	SIZE	PCS	MRP
	PRSAF001	20x1/2"	200/20	336.02
	PRSAF002	25x1/2"	150/50	449.26

**REDUCER**



24	CODE	SIZE	PCS	MRP
	PBRD001	25/20mm	(CTN/POUCH) *	81.20
	PBRD002	32/25mm	*	107.41
	PBRD003	32/20mm	*	112.22

**TANK CONNECTOR**



25	CODE	SIZE	PCS	MRP
	PBTC001	32x1"	(CTN/POUCH) *	270.74

**END CAP**



26	CODE	SIZE	PCS	MRP
	PBEC001	20mm	(CTN/POUCH) *	66.76
	PBEC002	25mm	*	95.37
	PBEC003	32mm	*	125.93

**CROSSOVER BEND**



27	CODE	SIZE	PCS	MRP
	PBCB001	20mm	(CTN/POUCH) *	173
	PBCB002	25mm	*	263
	PBCB003	32mm	*	*

PLUMTEK Fastfit Fittings are presently upto 32mm, Soon complete range will be developed.

\*Prices are Per Metre for Pipe and Per Piece for Fittings



WALL CLAMP

28	CODE	SIZE	PCS (CTN/POUCH)	MRP
	PTWC001	20mm	500/50	8.89
	PTWC002	25mm	400/40	11.11
	PTWC003	32mm	300/30	17.78



LONG PIPE PLUG

29	CODE	SIZE	PCS (CTN/POUCH)	MRP
	PRTPO01	1/2"	200/20	22.04



PIPE PLUG

30	CODE	SIZE	PCS (CTN/POUCH)	MRP
	PRTPT01	1/2"	300/50	10.37



ENTRY SLEEVE

31	CODE	SIZE	PCS (CTN/POUCH)	MRP
	PBES001	20mm	500/50	4.81
	PBES002	25mm	400/40	7.22
	PBES003	32mm	300/30	9.63



SPACER WASHER

32	CODE	SIZE	PCS (CTN/POUCH)	MRP
	PRTS001	20mm	25	7.41
	PRTS002	25mm	25	9.26
	PRTS003	32mm	25	14.81



O-RING

33	CODE	SIZE	PCS (CTN/POUCH)	MRP
	PDMO001	20mm	25	14.81
	PDMO002	25mm	25	18.52
	PDMO003	32mm	25	22.22



GRAB RING

34	CODE	SIZE	PCS (CTN/POUCH)	MRP
	PSSG001	20mm	25	9.26
	PSSG002	25mm	25	11.11
	PSSG003	32mm	25	16.67



PIPE EDGE TRIMMER

35	CODE	SIZE	PCS (CTN/POUCH)	MRP
	PAL001	20-40mm		2777.78



PIPE CUTTER

36	CODE	SIZE	PCS (CTN/POUCH)	MRP
	PPCR001	20-40mm	10	2159.26
	PPCR002	20-75mm		7488.89



PE-RT PIPE SERIES

PN10/SDR11/S5

101	CODE	SIZE	PCS (LENGTH/BUNDLE)	MRP
	PRTL001	20x2.0mm	75	71.33
	PRTL002	25x2.3mm	50	110.00
	PRTL003	32x2.9mm	30	175.00
	PRTL004	40x3.7mm	15	275.00
	PRTL005	50x4.6mm	10	425.00
	PRTL006	63x5.8mm	7	683.33
	PRTL007	75x6.8mm	5	946.67
	PRTL008	90x8.2mm	5	1366.67
	PRTL009	110x10.0mm	3	2016.67
	PRTL010	125x11.40mm	3	2666.67
	PRTL011	160x14.60mm	1	4250.00



PN16/SDR7.4/S 3.2

102	CODE	SIZE	PCS (LENGTH/BUNDLE)	MRP
	PRTL101	20x2.8mm	75	100.00
	PRTL102	25x3.5mm	50	160.00
	PRTL103	32x4.4mm	30	250.00
	PRTL104	40x5.5mm	15	383.33
	PRTL105	50x6.9mm	10	600.00
	PRTL106	63x8.6mm	7	966.67
	PRTL107	75x10.3mm	5	1333.33
	PRTL108	90x12.3mm	5	1916.67
	PRTL109	110x15.1mm	3	2683.33
	PRTL110	125x16.90mm	3	3566.67
	PRTL111	160x21.9mm	1	5833.33



PN20/SDR 6/S2.5

103	CODE	SIZE	PCS (LENGTH/BUNDLE)	MRP
	PRTL201	20x3.4mm	75	116.67
	PRTL202	25x4.2mm	50	178.33
	PRTL203	32x5.4mm	30	291.67
	PRTL204	40x6.7mm	15	448.33
	PRTL205	50x8.3mm	10	693.33
	PRTL206	63x10.5mm	7	1100.00
	PRTL207	75x12.5mm	5	1540.00
	PRTL208	90x15.0mm	5	2333.33
	PRTL209	110x18.3mm	3	3266.67
	PRTL210	125x20.8mm	3	3916.67
	PRTL211	160x26.6mm	1	7066.67



PE-RT FABRICATED FITTINGS

PLASTIC UNION

151	CODE	SIZE	PCS (CTN/POUCH)	MRP
	PRTPU001F	20mm	*	71.11
	PRTPU002F	25mm	*	107.78
	PRTPU003F	32mm	*	161.85



MALE THREAD COUPLER

153	CODE	SIZE	PCS (CTN/POUCH)	MRP
	PRTCM002F	20x3/4"	*	170.56
	PRTCM003F	25x1 1/2"	*	156.44
	PRTCM005F	32x1 1/2"	*	182.78
	PRTCM006F	32x3/4"	*	192.22



FEMALE THREAD COUPLER

154	CODE	SIZE	PCS (CTN/POUCH)	MRP
	PRTCF002F	20x3/4"	*	147.22
	PRTCF003F	25x1 1/2"	*	124.78
	PRTCF005F	32x1 1/2"	*	137.78
	PRTCF006F	32x3/4"	*	177.22



FEMALE THREAD TEE

155	CODE	SIZE	PCS (CTN/POUCH)	MRP
	PRTTF003F	25x3/4"	*	185.56
	PRTTF005F	32x3/4"	*	218.89
	PRTTF006F	32x1"	*	435.00



MALE THREAD TEE

156	CODE	SIZE	PCS (CTN/POUCH)	MRP
	PRTTM003F	25x3/4"	*	219.00
	PRTTM005F	32x3/4"	*	250.00
	PRTTM006F	32x1"	*	418.00



MALE THREAD ELBOW

157	CODE	SIZE	PCS (CTN/POUCH)	MRP
	PRTM003F	25x3/4"	*	204.00
	PRTM005F	32x3/4"	*	240.00
	PRTM006F	32x1"	*	397.00



FEMALE THREAD ELBOW

158	CODE	SIZE	PCS (CTN/POUCH)	MRP
	PRTEF003F	25x3/4"	*	187.22
	PRTEF005F	32x3/4"	*	227.22
	PRTEF006F	32x1"	*	421.67



MALE THREAD UNION

161	CODE	SIZE	PCS (CTN/POUCH)	MRP
	PRTUM001F	20x1 1/2"	*	352.22
	PRTUM002F	25x3/4"	*	502.93
	PRTUM003F	32x1"	*	729.63



FEMALE THREAD UNION

162	CODE	SIZE	PCS (CTN/POUCH)	MRP
	PRTUF001F	20x1 1/2"	*	335.56
	PRTUF002F	25x3/4"	*	472.93
	PRTUF003F	32x1"	*	739.63



METAL UNION

163	CODE	SIZE	PCS (CTN/POUCH)	MRP
	PRTUN001F	20x1 1/2"	*	353.89
	PRTUN002F	25x3/4"	*	434.26
	PRTUN003F	32x1"	*	636.30



\*Prices are Per Metre for Pipe and Per Piece for Fittings



**ABOUT PE-RT PIPES & FITTINGS**

PE-RT (Type II) is an universal plastic material. It can be joined by socket fusion welding and by mechanical fittings like our universal fastfit system. It can be used for distribution of hot & cold water with no scaling, no corrosion, food grade and easy installation.



**FOOD GRADE**

PERT pipe is a food grade material. It is ideal for use in food grade industries - including dairy, breweries, wineries, and more. It's also great for other industries like pharma industry and paper mills as well as chemical plants that use corrosive chemicals.



**THERMAL INSULATION**

PLUMTEK PERT Pipe contains the best thermal insulation properties because it has the lowest heat conductivity of the 1/250 steel pipe and 1/1700 copper pipe. Therefore, it is suitable for water supply, hot water and heating pipes.



**LOW SPECIFIC WEIGHT**

PLUMTEK PERT pipe has low density as compared to conventional metal pipes (1/8th times of metal pipe)



NO GLUE NEEDED



NO WELDING NEEDED

(\*But PE-RT pipes can be welded with PE-RT Fittings)

**IMPORTANT FEATURES OF PLUMTEK PERT PIPES & FITTINGS**

**Easy to Install**



PLUMTEK FASTFIT PE-RT piping method offers fast installation and it has been developed as a Push fitting system, which does not require tools and technology. And it can be easily joined through a variety of joining methods.

**Low Temperature use**



PLUMTEK FASTFIT PE-RT system has excellent low-temperature resistance, so it can be constructed even when the temperature is low in winter(-30 °C), and the pipe does not need to be preheated during bending.

**Non-Toxic Product**



PE-RT is nontoxic material verified by NSF. Therefore, it can be used for potable waterworks.

**Electrical Insulation**



Unlike metal pipe material, PLUMTEK FASTFIT PE-RT has excellent electrical insulation.

**Fitness for Use in Seismic Areas**



Flexibility of the PLUMTEK FASTFIT PE-RT pipe is best suited to be used in seismic prone areas. The pipe is not prone to any damages.

**360° Rotation possible**



PLUMTEK FASTFIT PE-RT system can be easier to bend and it can be rotated 360° even after connecting pipes and fittings.

**The Ultimate Strength**



PLUMTEK FASTFIT PE-RT Plumbing System has no decline in quality and no change on creep PE-RT is a high-temperature flexible plastic pressure pipe with extensive testing for durability and material performance.

**Flexibility & Light Weight**



Flexibility to bend the pipe around corners, thus reducing the consumption of pipe fittings and ultimate installation cost and light weight make transportation easy.

**Maintenance Free**



PLUMTEK FASTFIT PE-RT pipes are stress crack resistance. When the pipe is bending, the stress in the bent part loose quickly. Therefore no maintenance cost after installation.

**Chemical Resistance**



PLUMTEK FASTFIT PE-RT system is strong against chemical reaction and corrosion resistant. It prevents bacteria & algae from breaching into the plumbing system. The PERT pipes are resistant to the most commonly used antifreeze fluids.

**Low Wastage**



Due to flexibility of PE-RT pipes they can be supplied in 50-100 meter coils. This means exact length can be cut for installation and there is no wastage of pipe compared to standard length pipes.

**Noise Free**



PLUMTEK FASTFIT PE-RT Plumbing System helps no more noise issue from water hammer, constant pressure and fluctuating temperatures.

**Wide temperature application**



PLUMTEK FASTFIT PE-RT pipe have wide operating temperature range from -30°C to 95°C

**Freezing and Heat Resistance**



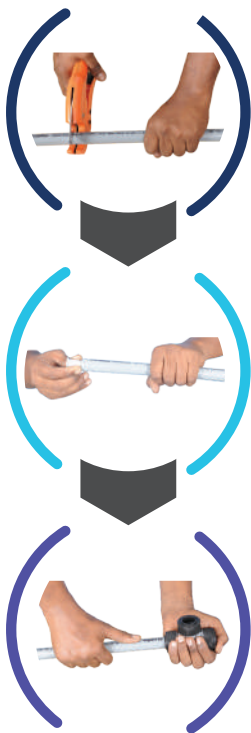
On account of the high elasticity, the PLUMTEK FASTFIT PE-RT plumbing system assures heat resistance and protects it from freezing.

**Cost Effective**



Flexibility to speed installation decrease labour cost, long term reliability and less deficiency rate.

**PLUMTEK FASTFIT SYSTEM INSTALLATION GUIDE**



**Step: 1**

**Cutting the Pipe**

Use pipe cutter to cut the pipe on a cut mark (>|<).



**Step: 2**

**Inserting the Entry Sleeve/Stiffener**

Before fixing the pipe into 'Fastfit' fitting support sleeve/ stiffener must be inserted completely.

**Step: 3**

**Inserting the Pipe into Fitting**

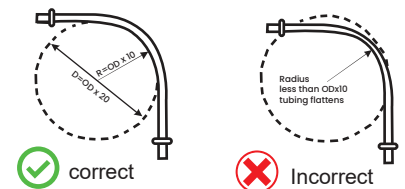
- Take a Plumtek Fastfit and just spin the Retaining cap 2-3 Rotation only to loosen the cap.
- Take a Pipe with support sleeve and push it gently upto the next mark and tighten the cap by hand (no tools). That's it.



Scan for PE-RT Installation Video

**BENDING PE-RT PIPE**

PE-RT (Type II) pipe can be repeatedly bent and flexed with no affects to the integrity of the pipe however the minimum radius should be 10x the outside diameter of the pipe. Bending further will run the risk of kinking occurs the section should be cut out and replaced.



Installing PE-RT Pipes  
(\*Bends near fittings are not advisable)

**THINGS TO REMEMBER DURING INSTALLATION**



**Avoid disassembling the fitting**

Before fixing the pipe into "Fastfit" fitting do not remove cap fully.



**Avoid Re-Jointing**

Retaining Cap is factory fitted part to obtain the right torque, requires no further tightening. If cap becomes loose it can be easily tightened by hand without any tools.



**Avoid Connection on Bent Position**

Make sure the pipe should not be bent near fittings after the insertion. If bent, it could cause leakage in the pipe or damaging the grab ring.



**Carrying and storing the pipe**

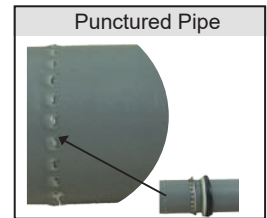
PLUMTEK PE-RT pipe is semi rigid. Therefore do not scratch, or place them close to sunlight and fire. Please Handle Carefully.

**RE - INSTALLATION**

**Step:1** Take the push fittings and put the internal parts as per shown in the image. (Page no.3)

**Step:2** Partially Tighten the cap upto Two/Three Threads.

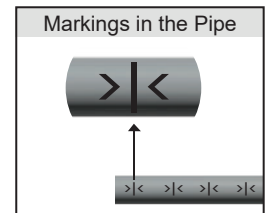
**Step:3** Then Repeat the Installation Process again (Page no.8)



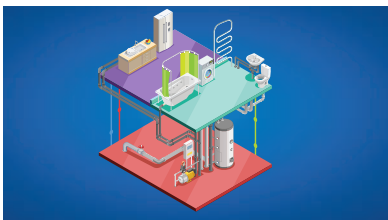
**REPAIR**

**Step: 1** At First Loosen the cap fully from the fittings and remove the pipe fully from the fittings.

- Step: 2**
- Observe any damages | scratches or puncture on the pipe, if no damages simply cut the grab ring alone and take fresh grab ring and do the Re-installation.
  - If any damages found simply cut the pipe on the marking and remove the O-ring and space washer from the pipe for reuse and do the Re-installation process.



**FIELDS OF APPLICATIONS**



**COLD AND HOT WATER DISTRIBUTION**



Potable water pipe networks for cold and hot water installations i.e., residential buildings, hotels, office and Buildings.

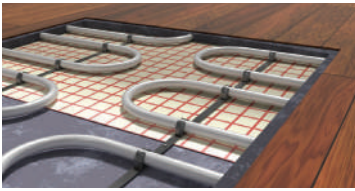


**PIPE FOR SOLAR HEATING SYSTEM**



Plumtek PE-RT Pipes is used for hot water supply and heating in solar houses.





**UNDER-FLOOR HEATING PIPES**

Plumtek PE-RT system is ideal for the construction of ventilation units and underground systems due to its high thermal insulation and high durability.



**INDUSTRIAL PIPE**

Plumtek PE-RT system is very opposed to chemical attack, which is very appropriate to use in a chemical factory and food production plant.



**AIR CONDITIONING AND CHILLERS**

Due to its wide temperature range -30°C to 95°C, the PLUMTEK PE-RT system can be used in Air Conditioner and chillers

**ACCEPTABLE FACTORS & REMEDIES**

Factor	Occurences	Remedies
<b>LEAKAGES</b>	Leakages happens due to scratches on the surface of the pipe. (small amount of leakage occurs, leakage and stoppage are repeated )	Rough handling or sand stuck on the surfaces may cause O-ring to fail to maintain air tightness. Pay attention or be more careful when you handle the pipe to avoid damage.
	Foreign objects (sand,hair, glass etc..) can stuck between the O-ring and the surface of the pipe.	Applying lubricant on the O-ring helps to protect from leakages that happened due to foreign objects like a hair stuck on the surface-keep the surrounding clean and check for foreign objects before starting the work.
	Damages to O-ring	Use exclusive cutters to cut the pipe. The result of pipes by using any saws or any other tools can lead to damage the O-ring.  O-ring can be heavily pressed and broken during the de-plumbing works of connections. Attention should be paid during reassembly.
	The pipe attached to the fitting is bent at straight angle.	Leakages can occur in the O-ring when the pipe is directly bent from the fitting. Avoid bending of pipe during piping work.

## APPLICATION CLASS TABLE ( DIN EN ISO 22391 -1,2 )

The PLUMTEK PE-RT pipes are Monolayer pipes with superior thermal resistance. The PE-RT pipes do not have an oxygen barrier and are mainly used for drinking water (hot & cold) installations.

PLUMTEK PE-RT Pipes					Maximum working pressure table ( DIN EN ISO 22391-2)				
Outer diameter (mm)	16	20	25	32	APPLICATION CLASS	Ø16 X 2.2	Ø20 X 2.8	Ø25 X 3.5	Ø32 X 4.4
Wall thickness (mm)	2.2	2.8	3.5	4.4	1	10	8	8	8
Weight (kg/m)	0.098	0.153	0.238	0.388	2	8	8	6	6
Coefficient linear expansion (mm/mK)	0.18	0.18	0.18	0.18	4	10	8	8	8
Application class ( ISO 22391)	2-4-5	2-4-5	2-4-5	2-4-5	5	8	6	6	6

Value expressed in bar

As per Table 1 of ISO 22391 ( Part 1 ) : 2009 specification PE-RT pipes are recommended for four different application classes as per following details:

- Application Class 1 :  
For Hot Water Supply at 60°C
- Application Class 2 :  
For Hot Water Supply at 70°C
- Application Class 4 :  
Under Floor Heating and Low temperature radiators
- Application Class 5 :  
High temperatures radiators

See application class table (DIN EN ISO 22391-1)

See maximum working pressure table (DIN EN ISO 22391-2) and maximum working temperature(°C)

## Physical Properties : PE-RT Type II

PROPERTY	TEST METHOD	UNIT	VALUES (TYPICAL)
Melt Flow Rate	ISO 1133	g/10 min	0.3
Density	ISO 1133	g/cm <sup>3</sup>	0.950
Vicatsoftning Point	ISO 306	°c	125
Thermal Conductivity at 60°C	DIN 16833/DIN EN 12664	g/10 min	0.4
Co-efficient of thermal Expansion	DIN 53752 A (20°C-70°C)	cm/cm/°c	0.00017

## Mechanical Properties : PE-RT Type II

PROPERTY	TEST METHOD	UNIT	VALUES (TYPICAL)
Hardness	ISO 868	Shore	>60
Tensile Strength Yield	ISO 527-2	MPa	>24
Tensile Strength Break	ISO 527-2	MPa	33
Elongation at Break	ISO 527-2	%	>600
Flexural Modulus	ISO 178	MPa	>1100
Izod Impact	ISO 180	Kj/m <sup>2</sup>	>22
Stress Crack Resistance	ASTM D 1693	F 50	No Failure



PIPE SERIES - TABLE

S5 / SDR 11						
DIAMETER (MM)	MAX DIAMETER (MM)	PRESSURE (CLASS)	THICKNESS (MM)	20°C	60°C	80°C
20	20.3	4	1.9	10	8	4
25	25.3	4	2.3	10	8	4
32	32.3	4	2.9	10	8	4
40	40.4	4	3.7	10	8	4
50	50.5	4	4.6	10	8	4
63	63.6	4	5.8	10	8	4
75	75.7	4	6.9	10	8	4
90	90.9	4	8.2	10	8	4
110	111	4	10	10	8	4
125	126.2	4	11.4	10	8	4
160	161	4	14.6	10	8	4

>50 Years 49 Years 1 Year

S3.2 / SDR 7.4						
DIAMETER (MM)	MAX DIAMETER (MM)	PRESSURE (CLASS)	THICKNESS (MM)	20°C	60°C	80°C
20	20.3	8	2.8	16	12.5	8
25	25.3	8	3.4	16	12.5	8
32	32.3	8	4.4	16	12.5	8
40	40.4	8	5.5	16	12.5	8
50	50.5	8	6.8	16	12.5	8
63	63.6	8	8.6	16	12.5	8
75	75.7	8	10.2	16	12.5	8
90	90.9	8	12.2	16	12.5	8
110	111	8	14.9	16	12.5	8
125	126.2	8	16.9	16	12.5	8
160	161	8	21.7	16	12.5	8

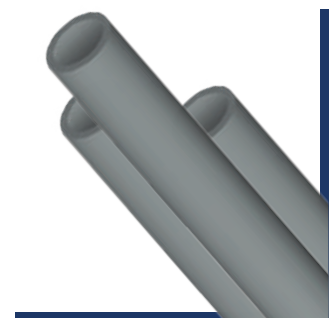
>50 Years 49 Years 1 Year

S2.5 / SDR 6						
DIAMETER (MM)	MAX DIAMETER (MM)	PRESSURE (CLASS)	THICKNESS (MM)	20°C	60°C	80°C
20	20.3	10	3.4	20	16	10
25	25.3	10	4.2	20	16	10
32	32.3	10	5.4	20	16	10
40	40.4	10	6.7	20	16	10
50	50.5	10	8.3	20	16	10
63	63.6	10	10.5	20	16	10
75	75.7	10	12.5	20	16	10
90	90.9	10	15	20	16	10
110	111	10	18.3	20	16	10
125	126.2	10	20.8	20	16	10
160	161	10	26.7	20	16	10

>50 Years 49 Years 1 Year

PE-RT Type I and Type II  
(Type II will have Better Long Term Hydraulic Strength)

\*Special order can be made from (200mm to 315mm )  
with all fittings of socket fusion | butt fusion



PLUMTEK PE-RT SOCKET FUSION FITTINGS

PERT Pipes can be joined by Socket Fusion / Welding method by using PE-RT Socket Fusion Fittings and welding temperature, dies are similar to PPR.

COUPLER

201	CODE	SIZE	PCS	MRP
	PCR001S	20mm	1600	12.10
	PCR002S	25mm	1000	18.82
	PCR003S	32mm	560	32.27
	PCR004S	40mm	360	53.78
	PCR005S	50mm	200	87.39
	PCR006S	63mm	100	170.74
	PCR007S	75mm	60	273.78
	PCR008S	90mm	40	412.09
	PCR009S	110mm	24	687.30
	PCR010S	125mm	20	1356.67
	PCR011S	160mm	14	1532.67



EQUAL TEE

202	CODE	SIZE	PCS	MRP
	PTE001S	20mm	800	22.86
	PTE002S	25mm	480	38.99
	PTE003S	32mm	230	73.94
	PTE004S	40mm	120	122.34
	PTE005S	50mm	70	213.77
	PTE006S	63mm	40	396.61
	PTE007S	75mm	30	762.67
	PTE008S	90mm	18	1174.96
	PTE009S	110mm	9	2032.15
	PTE010S	125mm	6	3483.33
	PTE011S	160mm	4	4697.00



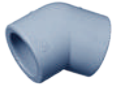
ELBOW 90°

203	CODE	SIZE	PCS	MRP
	PEN001S	20mm	1000	18.54
	PEN002S	25mm	650	32.27
	PEN003S	32mm	300	56.47
	PEN004S	40mm	150	100.83
	PEN005S	50mm	100	173.43
	PEN006S	63mm	60	344.18
	PEN007S	75mm	30	574.65
	PEN008S	90mm	20	928.28
	PEN009S	110mm	12	1636.96
	PEN010S	125mm	10	2970.00
	PEN011S	160mm	5	3993.00



ELBOW 45°

204	CODE	SIZE	PCS	MRP
	PEF001S	20mm	1500	20.37
	PEF002S	25mm	750	36.67
	PEF003S	32mm	380	69.26
	PEF004S	40mm	300	118.15
	PEF005S	50mm	150	197.59
	PEF006S	63mm	70	391.11
	PEF007S	75mm	40	592.78
	PEF008S	90mm	22	926.85
	PEF009S	110mm	15	1615.37
	PEF010S	125mm	10	2424.07
	PEF011S	160mm	7	2900.74



END CAP

205	CODE	SIZE	PCS	MRP
	PEC001S	20mm	2700	9.17
	PEC002S	25mm	1500	18.33
	PEC003S	32mm	800	24.24
	PEC004S	40mm	520	42.78
	PEC005S	50mm	250	78.43
	PEC006S	63mm	150	138.31
	PEC007S	75mm	100	264.00
	PEC008S	90mm	60	407.41
	PEC009S	110mm	36	762.67
	PEC010S	125mm	25	1246.67
	PEC011S	160mm	20	1538.17



REDUCER ELBOW

206	CODE	SIZE	PCS	MRP
	PRE001S	25/20mm	900	25.67
	PRE002S	32/20mm	500	34.22
	PRE003S	32/25mm	480	44.20
	PRE004S	40/32mm	200	82.70
	PRE005S	40/25mm	200	104.09
	PRE006S	40/20mm	200	114.07
	PRE007S	50/40mm	60	205.33
	PRE008S	50/32mm	60	171.11
	PRE009S	50/25mm	60	201.06



MALE THREAD COUPLER

207	CODE	SIZE	PCS	MRP
	PCM001S	20x1/2"	320	152.17
	PCM002S	20x3/4"	200	169.89
	PCM003S	25x1/2"	200	153.80
	PCM004S	25x3/4"	200	173.15
	PCM005S	32x1/2"	200	176.61
	PCM006S	32x3/4"	200	186.19
	PCM007S	32x1"	150	354.04
	PCM008S	40x1-1/4"	60	624.76
	PCM009S	50x1-1/2"	50	783.85
	PCM010S	63x2"	40	1185.35
	PCM011S	75x2-1/2"	24	1875.13
	PCM012S	90x3"	14	3848.53
	PCM013S	110x4"	6	5213.92



FEMALE THREAD COUPLER

208	CODE	SIZE	PCS	MRP
	PCF001S	20x1/2"	320	99.81
	PCF002S	20x3/4"	250	147.07
	PCF003S	25x1/2"	250	117.74
	PCF004S	25x3/4"	250	163.37
	PCF005S	32x1/2"	250	127.52
	PCF006S	32x3/4"	200	171.52
	PCF007S	32x1"	150	388.87
	PCF008S	40x1-1/4"	80	670.19
	PCF009S	50x1-1/2"	50	985.93
	PCF010S	63x2"	40	1440.19
	PCF011S	75x2-1/2"	24	2115.26
	PCF012S	90x3"	14	3591.05
	PCF013S	110x4"	6	6115.19



MALE THREAD ELBOW

209	CODE	SIZE	PCS	MRP
	PEM001S	20x1/2"	300	157.06
	PEM002S	25x1/2"	240	170.09
	PEM003S	25x3/4"	200	187.81
	PEM004S	32x1/2"	120	215.72
	PEM005S	32x3/4"	120	218.78
	PEM006S	32x1"	100	388.26



FEMALE THREAD ELBOW

210	CODE	SIZE	PCS	MRP
	PET001S	20x1/2"	320	111.22
	PET002S	25x1/2"	250	122.63
	PET003S	25x3/4"	200	171.52
	PET004S	32x1/2"	140	160.11
	PET005S	32x3/4"	120	205.74
	PET006S	32x1"	100	416.57
	PET007S	40x1-1/4"	50	725.59
	PET008S	50x1-1/2"	30	1060.89



WALL PLATE MALE THREAD ELBOW

211	CODE	SIZE	PCS	MRP
	PWM001S	20x1/2"	***	209.00
	PWM002S	25x1/2"	***	214.50



WALL PLATE FEMALE THREAD ELBOW

212	CODE	SIZE	PCS	MRP
	PWF001S	20x1/2"	***	156.20
	PWF002S	25x1/2"	***	165.00



TEMPLATE - ADJUSTABLE (WALL MIXER ELBOW)

213	CODE	PCS	MRP
	PTE001	***	60



MALE THREAD TEE

214	CODE	SIZE	PCS	MRP
	PTM001S	20x1/2"	225	165.20
	PTM002S	25x1/2"	160	178.24
	PTM003S	25x3/4"	120	202.48
	PTM004S	32x1/2"	130	204.31
	PTM005S	32x3/4"	100	228.56
	PTM006S	32x1"	70	407.81



FEMALE THREAD TEE

215	CODE	SIZE	PCS	MRP
	PTF001S	20x1/2"	250	111.22
	PTF002S	25x1/2"	200	137.30
	PTF003S	25x3/4"	160	169.89
	PTF004S	32x1/2"	120	147.07
	PTF005S	32x3/4"	120	197.59
	PTF006S	32x1"	80	429.61
	PTF007S	40x1-1/4"	40	679.96



MALE THREAD UNION

216	CODE	SIZE	PCS	MRP
	PUM001S	20mm	200	376.44
	PUM002S	25mm	200	540.02
	PUM003S	32mm	100	786.09
	PUM004S	40mm	80	1375.00
	PUM005S	50mm	50	2295.74
	PUM006S	63mm	20	3812.31



FEMALE THREAD UNION

217	CODE	SIZE	PCS	MRP
	PUF001S	20mm	240	358.11
	PUF002S	25mm	240	507.02
	PUF003S	32mm	150	797.09
	PUF004S	40mm	80	1331.00
	PUF005S	50mm	60	2244.41
	PUF006S	63mm	20	3614.31



METAL UNION

218	CODE	SIZE	PCS	MRP
	PUN001S	20mm	200	367.28
	PUN002S	25mm	150	450.19
	PUN003S	32mm	100	666.93
	PUN004S	40mm	80	902.00
	PUN005S	50mm	50	1771.41
	PUN006S	63mm	20	2422.65



PLASTIC UNION

219	CODE	SIZE	PCS	MRP
	PUP001S	20mm	600	70.89
	PUP002S	25mm	300	117.33
	PUP003S	32mm	250	186.59
	PUP004S	40mm	150	250.15
	PUP005S	50mm	70	373.19
	PUP006S	63mm	40	805.04



FLANGE

220	CODE	SIZE	PCS (CTN/POUCH)	MRP
	PFL001S	32mm	100	234.26
	PFL002S	40mm	75	311.67
	PFL003S	50mm	60	372.78
	PFL004S	63mm	60	438.17
	PFL005S	75mm	45	535.33
	PFL006S	90mm	40	702.17
	PFL007S	110mm	36	836.00
	PFL008S	125mm	20	1283.33
	PFL009S	160mm	15	1386.00



FLANGE CORE

221	CODE	SIZE	PCS (CTN/POUCH)	MRP
	PFC001S	32mm	500	42.57
	PFC002S	40mm	350	62.74
	PFC003S	50mm	300	57.04
	PFC004S	63mm	200	86.98
	PFC005S	75mm	120	136.89
	PFC006S	90mm	80	213.89
	PFC007S	110mm	50	293.74
	PFC008S	125mm	25	670.19
	PFC009S	160mm	22	814.20



FOUR WAY TEE/CROSS

224	CODE	SIZE	PCS (CTN/POUCH)	MRP
	PFT001S	20mm	40	32.59
	PFT002S	25mm	360	69.26
	PFT003S	32mm	180	122.22
	PFT004S	40mm	90	211.85



WELD SADDLE (PLAIN)

225	CODE	SIZE	PCS (CTN/POUCH)	MRP
	PWP001S	40x20 mm	520	82.50
	PWP002S	50x20 mm	520	88.00
	PWP003S	63x32 mm	520	93.50
	PWP004S	63x25 mm	520	99.00
	PWP005S	75x32 mm	520	110.00
	PWP006S	75x25 mm	520	110.00
	PWP007S	90x32 mm	520	110.00
	PWP008S	90x25 mm	520	110.00
	PWP009S	110x32 mm	520	110.00
	PWP010S	110x25 mm	520	110.00
	PWP011S	125x32 mm	520	110.00
	PWP012S	125x40mm	520	247.50
	PWP013S	160x25mm	520	110.00
	PWP014S	160x32mm	520	110.00
	PWP015S	160x40mm	250	247.50
	PWP016S	160x50mm	100	330.00
	PWP017S	160x63mm	120	605.00
	PWP018S	160x75mm	-	880.00



BYE - PASS BEND

230	CODE	SIZE	PCS (CTN/POUCH)	MRP
	PBB001S	20mm	300	101.85
	PBB002S	25mm	180	152.78
	PBB003S	32mm	80	248.52



PIPE PLUG

233	CODE	SIZE	PCS (CTN/POUCH)	MRP
	PPP001S	1/2"	3000	6.52
	PPP002S	3/4"	2000	12.22
	PPP003S	1"	1000	20.37



WELDING MACHINE (India)

236	CODE	SIZE	PCS (CTN/POUCH)	MRP
	PWM112SI	20-40mm	5	1650.00
	PWM113SI	20-63mm	*	1900.00
	PWM114SI	75-110mm	4	3200.00 (NET BASIC)



REDUCER

222	CODE	SIZE	PCS (CTN/POUCH)	MRP
	PRR001S	25/20mm	1200	17.11
	PRR002S	32/20mm	720	28.52
	PRR003S	32/25mm	660	29.94
	PRR004S	40/20mm	600	42.78
	PRR005S	40/25mm	560	45.63
	PRR006S	40/32mm	360	49.91
	PRR007S	50/20mm	300	71.30
	PRR008S	50/25mm	300	71.30
	PRR009S	50/32mm	300	75.57
	PRR010S	50/40mm	200	86.98
	PRR011S	63/32mm	150	149.72
	PRR012S	63/40mm	120	183.33
	PRR013S	63/50mm	100	186.39
	PRR014S	75/40mm	90	247.70
	PRR015S	75/50mm	70	277.04
	PRR016S	75/63mm	60	290.07
	PRR017S	90/50mm	60	418.81
	PRR018S	90/63mm	50	423.70
	PRR019S	90/75mm	40	440.00
	PRR020S	110/63mm	39	738.83
	PRR021S	110/75mm	39	781.00
	PRR022S	110/90mm	39	825.00
	PRR023S	125/110mm	30	1425.93
	PRR024S	160/90mm	20	1812.96
	PRR025S	160/110mm	20	1717.22
	PRR026S	160/125mm	20	1588.89



WELD SADDLE (FEMALE THREAD)

226	CODE	SIZE	PCS (CTN/POUCH)	MRP
	PWF001S	40x1/2"	225	222.85
	PWF002S	50x1/2"	225	226.11
	PWF003S	63x1/2"	225	281.52
	PWF004S	63x3/4"	225	318.19
	PWF005S	75x1/2"	225	305.15
	PWF006S	75x3/4"	225	341.81
	PWF007S	90x1/2"	225	305.15
	PWF008S	90x3/4"	225	341.81
	PWF009S	110x1/2"	225	305.15
	PWF010S	110x3/4"	225	341.81
	PWF011S	125x1/2"	225	321.44
	PWF012S	125x3/4"	225	386.63
	PWF013S	160x1/2"	225	305.15
	PWF014S	160x3/4"	225	341.81



CONCEALED STOP VALVE

228	CODE	SIZE	PCS (CTN/POUCH)	MRP
	PCS001S	20mm	70	1179.44
	PCS002S	25mm	70	1425.93
	PCS003S	32mm	60	1512.50



CROSS OVER BEND

231	CODE	SIZE	PCS (CTN/POUCH)	MRP
	PCB001S	20mm	*	68
	PCB002S	25mm	*	110



TANK NIPPLE

234	CODE	SIZE	PCS (CTN/POUCH)	MRP
	PTN001S	32mm/1"	300	134.20
	PTN002S	40mm/1-1/4"	300	182.60
	PTN003S	50mm/1-1/2"	200	209.00
	PTN004S	63mm/2"	100	317.90



PIPE CUTTER (Imported)

237	CODE	SIZE	PCS (CTN/POUCH)	MRP
	PPC006S	20-40mm	900	660.00
	PPC007S	20-63mm	600	2200.00 (NET BASIC)



REDUCER TEE

223	CODE	SIZE	PCS (CTN/POUCH)	MRP
	PTR001S	25/20/25mm	540	37.07
	PTR002S	32/20/32mm	280	57.04
	PTR003S	32/25/32mm	250	62.74
	PTR004S	40/20/40mm	200	92.69
	PTR005S	40/25/40mm	150	98.39
	PTR006S	40/32/40mm	130	109.80
	PTR007S	50/20/50mm	120	148.30
	PTR008S	50/25/50mm	100	151.15
	PTR009S	50/32/50mm	80	163.98
	PTR010S	50/40/50mm	80	185.37
	PTR011S	63/25/63mm	72	265.22
	PTR012S	63/32/63mm	72	290.89
	PTR013S	63/40/63mm	72	308.00
	PTR014S	63/50/63mm	52	347.93
	PTR015S	75/25/75mm	40	554.07
	PTR016S	75/32/75mm	40	521.48
	PTR017S	75/40/75mm	40	511.70
	PTR018S	75/50/75mm	32	580.15
	PTR019S	75/63/75mm	32	663.26
	PTR020S	90/32/90mm	24	863.70
	PTR021S	90/40/90mm	24	847.41
	PTR022S	90/50/90mm	24	814.81
	PTR023S	90/63/90mm	16	891.41
	PTR024S	90/75/90mm	16	1013.63
	PTR025S	110/32/110mm	14	1385.19
	PTR026S	110/40/110mm	14	1352.59
	PTR027S	110/50/110mm	14	1315.11
	PTR028S	110/63/110mm	12	1380.30
	PTR029S	110/75/110mm	12	1518.81
	PTR030S	110/90/110mm	12	1760.00
	PTR031S	125/63/125mm	12	3520.00
	PTR032S	125/75/125mm	12	3960.00
	PTR033S	125/90/125mm	12	3996.67
	PTR034S	125/110/125mm	12	3721.67
	PTR035S	160/63/160mm	5	3611.67
	PTR036S	160/75/160mm	5	3648.33
	PTR037S	160/90/160mm	5	3611.67
	PTR038S	160/110/160mm	5	3400.83



STOP VALVE

227	CODE	SIZE	PCS (CTN/POUCH)	MRP
	PSV001S	20mm	120	690.56
	PSV002S	25mm	80	896.30
	PSV003S	32mm	60	942.13
	PSV004S	40mm	40	1536.94
	PSV005S	50mm	50	2689.91
	PSV006S	63mm	20	3337.69



CLAMP

229	CODE	SIZE	PCS (CTN/POUCH)	MRP
	PCL001S	20mm	2200	9.78
	PCL002S	25mm	1800	12.22
	PCL003S	32mm	1100	19.56
	PCL004S	40mm	700	36.67
	PCL005S	50mm	600	46.44
	PCL006S	63mm	500	51.33



LONG PIPE PLUG

232	CODE	SIZE	PCS (CTN/POUCH)	MRP
	PLP001S	1/2"	900	24.44
	PLP002S	3/4"	600	28.52



WELDING MACHINE (Imported)

235	CODE	SIZE	PCS (CTN/POUCH)	MRP
	PWM112S	20-63mm	*	3190.00
	PWM113S	75-110mm	*	8250.00
	PWM114S	160mm	*	8690.00
	PWM106S	125mm	-	2200.00 (NET BASIC)



REPAIR SET

238	CODE	SIZE	MRP
	PRS001S	9mm	285
	PRS002S	11mm	304



\*Prices are Per Metre for Pipe and Per Piece for Fittings

### ABOUT US

Euroaqua Plumtek private limited is an ISO 9001 2015 certified organization, which was started during the year 1997 by **Er. P. Mohan MD & CEO**. Our headquarters located at Sankari, Salem, Tamil Nadu and have multiple branches across India & Srilanka.

We are specialized in manufacturing PPR, PP-RCT, PE-RT, MDPE pipes & fittings. Under the brand name "PLUMTEK", which includes Taps, Faucets, Valves, Hoses and complete solution for Domestic & Industrial plumbing system. We are one of the leading Manufacturer and exporter of complete range of PPR pipes and fittings in India and first in South Asia, Introduced PP-RCT technology. We are exporting to more than 15 countries across the globe.

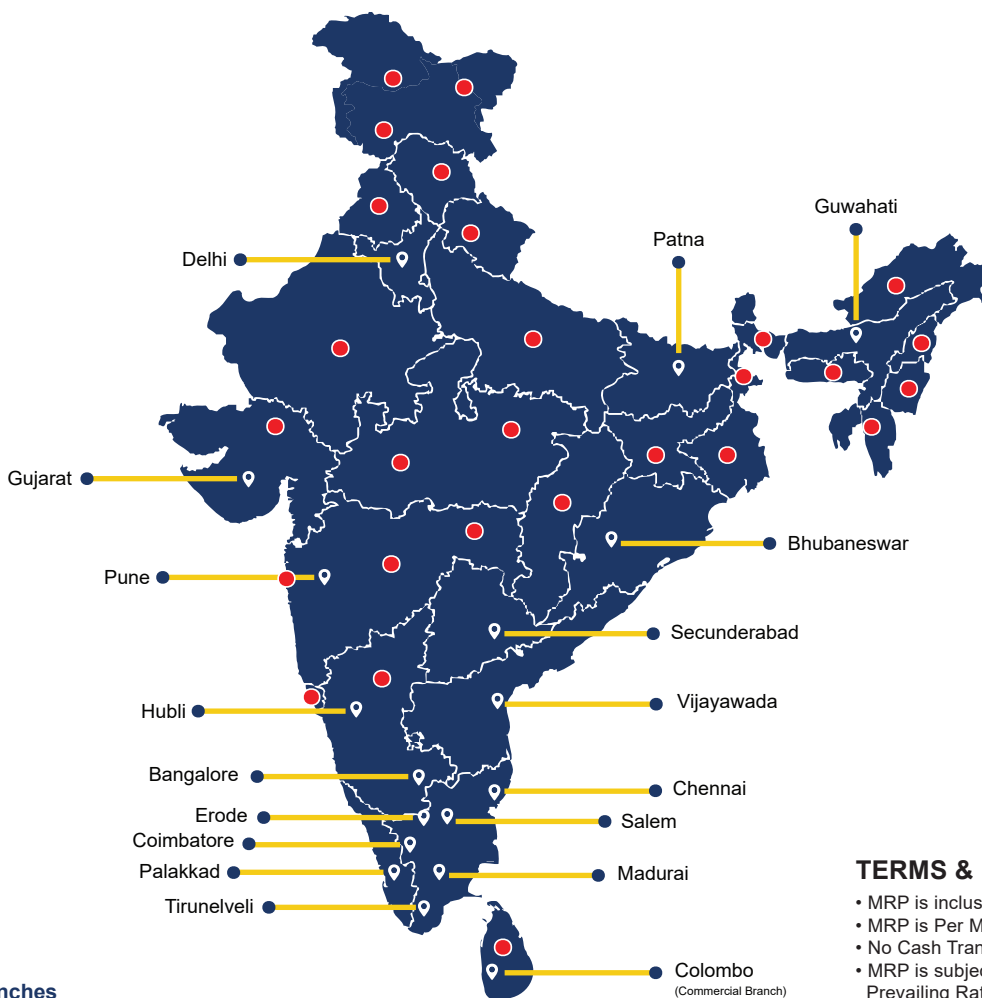
We aim to increase our product range to meet the every corner of a growing India with over 25 years of manufacturing experience. Expertise in bringing high quality solution to reduce bottom line Installation costs, extending the life span of piping system.

#### Vision

"Our vision is to achieve greater goals beyond boundaries with dedication & professionalism"

#### Mission

"We strive to offer our customers the cost-effective products at the excellent quality with the utmost satisfaction"



Our Branches

Products Available Areas ( Other than Branches)

#### TERMS & CONDITIONS

- MRP is inclusive of all Taxes.
- MRP is Per Metre/Piece only.
- No Cash Transaction is Allowed.
- MRP is subject to change without Prior Notice, Prevailing Rates will be changed at the Time of dispatch.
- All Previous MRP List get Cancelled.
- All Payments to be made by way of NEFT/RTGS only.
- All Transactions are subject to Sankagiri Jurisdiction only.

TAPS & FAUCETS

PVC HOSES

PPR PIPES & FITTINGS

PE-RT PIPES & FITTINGS

MDPE PIPES & FITTINGS



Scan for Plumtek Website



**EUROAQUA PLUMTEK PVT LTD**

An ISO 9001 : 2015 Certified Company



Scan for Plumtek Youtube

Edappadi Main Road, Kuppanoor P.O., Sankagiri - 637 301, Tamilnadu, India.

Customer Care +91 4283 242936/37 +91 99650 05555, 73730 73333

support@euroaquappr.com www.euroaquappr.com | www.plumtek.in

